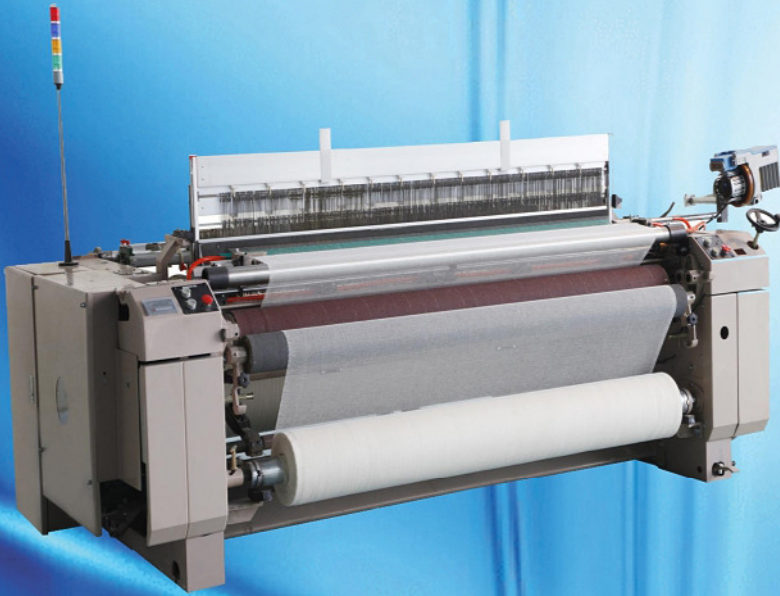


# INTES MONITORING SYSTEM



**Realtime  
Web based  
Loom  
Monitoring  
System**



**ENHANCED  
PRODUCTIVITY  
THROUGH  
REALTIME  
DATA ANALYSIS**

**[www.intes.in](http://www.intes.in)**



# Absolute Solution for Weaving Industry

**IMS** - *Intes realtime Machine Monitoring System for Weaving* from **INTES** since 2013. Our Goal is to inspire people to gain the most out of the Production and increase capacity by speeding up jobs with easily accessible fine-tuned information on realtime through hardware and software tools of **INTES**.

## INTES MONITORING SYSTEM CONSISTS OF

- Data Collection Devices(**DCD**)
- Power Supply & Data Converter Unit (**DCU**)
- Software

## DATA COLLECTION DEVICE (DCD)

Data Collection Device (DCD) collects Production related information (Run Time, Picks inserted, Stops, Stop Time, etc..) from the Machine and transfers all the information to the Server Computer on regular interval. Data Collection Devices have a Membrane Keyboard and Multiline LCD for easy usage.

## Power Supply & Data Coverter Unit(DCU)

Data Collection Terminals are powered by 15V DC Power Supply. Data ConverterUnit receives the collected information from Data Collection Terminals and convert the 2-wire data to serial data and sends to Server Computer.

## SOFTWARE

Intes Monitoring System software is developed using the widely popular **Php** for Programming and **MySQL** as database. Server software will acquire information from Data Collection Terminals through Data Converter Unit at regular intervals and generates Real time Views, Reports and Charts for any selected Criteria / Period.

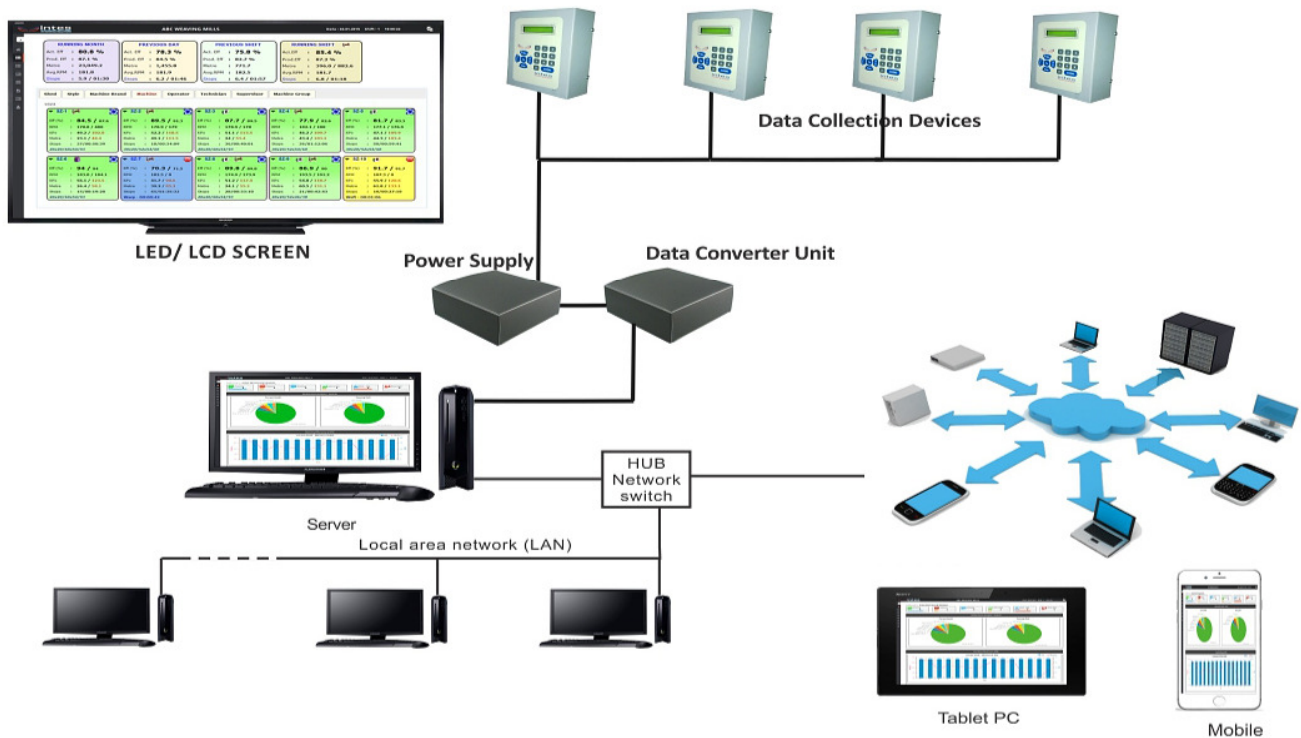
## KEY FEATURES OF INTES MONITORING SYSTEM FOR WEAVING

- ✍ User friendly **Web based / LAN based** Software. User can monitor the industry anywhere from the world through Internet.
- ✍ Integrated information of all Machines at one Place.
- ✍ User friendly membrane keypad with 2- Line LCD for Data Collection Device.
- ✍ Provision to Enter Stop Codes at Data Collection Device.
- ✍ Production & Efficiency Related information can be viewed for Running Shift and Completed last 2 shifts at Data Collection Device.
- ✍ Various Reports on Production, Stoppage & Efficiency based on selected criteria.
- ✍ Instantaneous Efficiency and Production Charts.
- ✍ Comparison and Performance Reports
- ✍ Graphical Dashboard for important parameters.
- ✍ Status Monitoring as per Shed Layout.
- ✍ Hourly Break analysis and Efficiency Graphs.
- ✍ Production Planning and Order status Reports.
- ✍ Automatic Employee allocation
- ✍ Customised Reports and Charts
- ✍ ERP Interface
- ✍ SMS Alerts (Optional)
- ✍ Provision to send reports by e-mail automatically (Optional)
- ✍ Provision to connect big LED / LCD screens (Optional)

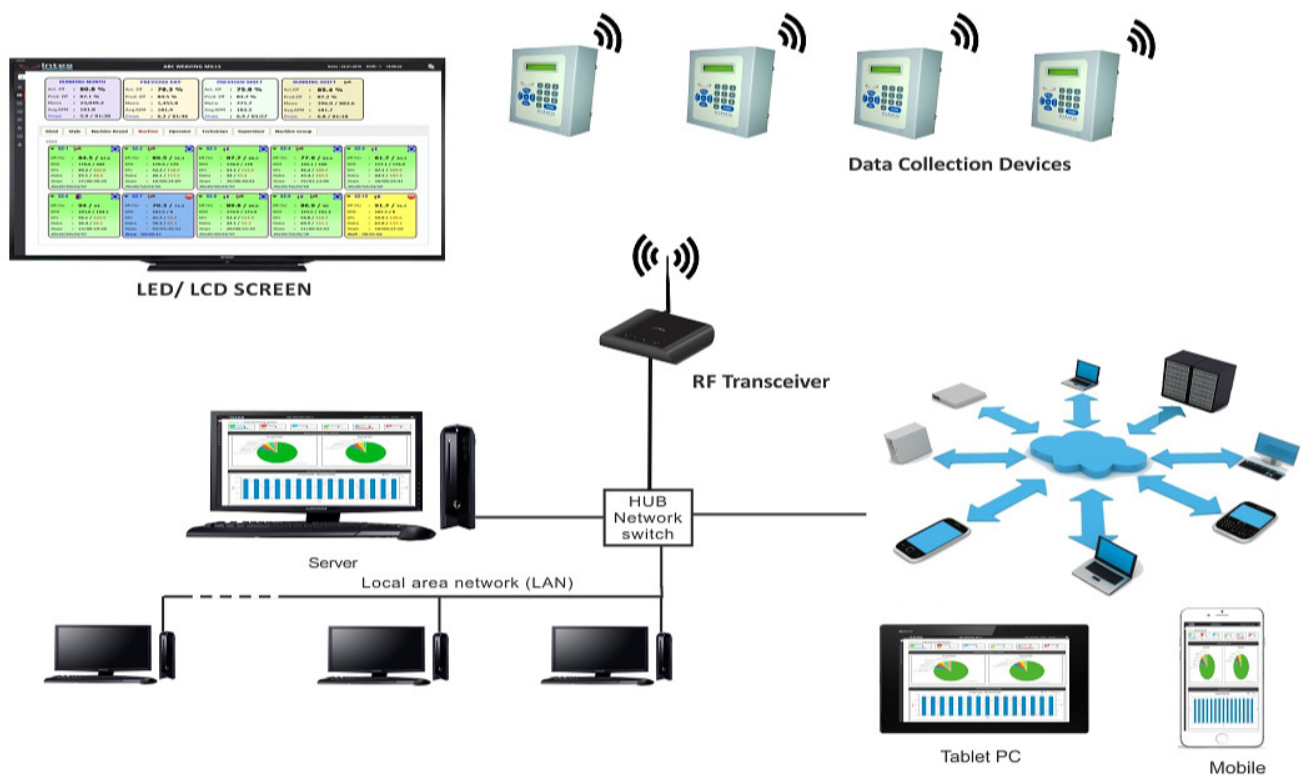
# Absolute Solution for Weaving Industry

## CONFIGURATION:

### WIRED MODEL



### WIRELESS MODEL





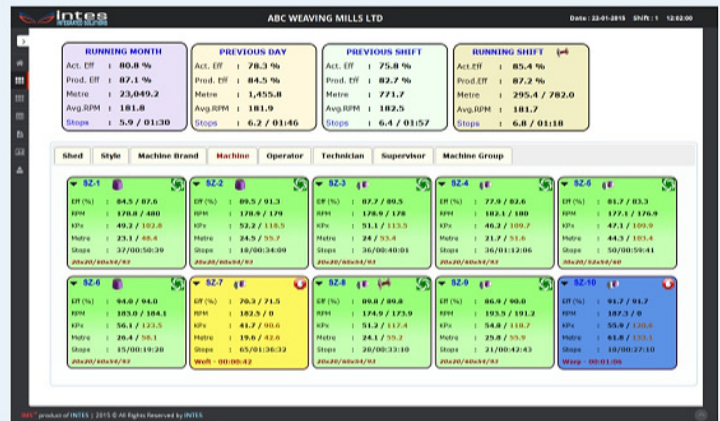
# INTES MONITORING SYSTEM

## Sample Screenshots:

### Dashboard



### Live Monitoring



### Production Report

ABC WEAVING MILLS LTD.

Production Report - Shift wise Details for Running Shift

Machine	Design	AEF	UEF	PER	RPM	KPS	Moist	Wet	Vel	Out	Warp/MPH	Wet/MPH	Out/MPH	Stop	Ln	Min/Stop	Revol/MPH
PC-123	66076	27.5	82.1	28.7	1028.6	77.2	19.4	20	34	11	25.9	31.1	14.2	1	0.2	01:36	120.4
PC-124	66091	84.2	100.0	84.2	649.3	151.1	45.1	11	35	15	7.3	23.2	8.6	0	0.0	00:43	40.4
PC-125	66076	43.2	81.9	52.8	496.2	48.0	12.1	22	24	12	45.9	50.0	25.0	3	0.8	01:46	125.1
PC-126	66109	83.9	100.0	83.9	399.8	138.0	38.9	14	34	9	10.1	24.6	2.2	0	0.0	00:50	38.4
PC-127	65891	83.9	100.0	83.9	425.0	146.0	41.9	8	11	5	3.5	7.5	3.4	0	0.0	00:20	11.7
PC-128	66076	70.0	100.0	70.0	425.5	81.4	20.5	32	30	3	36.3	24.6	3.7	0	0.0	01:26	70.0
PC-129	66076	65.1	92.3	75.3	425.3	75.0	19.9	28	15	5	37.3	17.3	6.7	1	0.4	01:55	64.0
PC-130	66109	5.0	5.0	5.0	5.0	5.0	5.0	0	0	0	0.0	0.0	0.0	0	0.0	00:00	0.0
<b>Total</b>	<b>8</b>	<b>65.7</b>	<b>91.8</b>	<b>68.7</b>	<b>569.2</b>	<b>717.4</b>	<b>104.8</b>	<b>135</b>	<b>161</b>	<b>52</b>	<b>18.8</b>	<b>22.4</b>	<b>7.2</b>	<b>5</b>	<b>1.4</b>	<b>01:21</b>	<b>55.5</b>

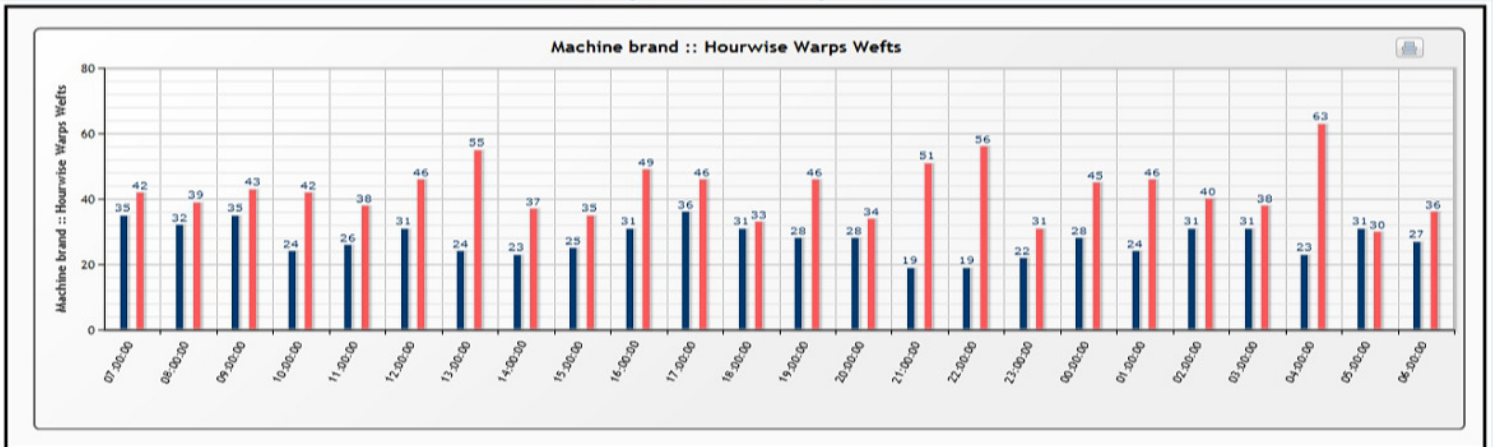
### Performance Report

ABC WEAVING MILLS LTD.

Performance Report - Shift wise Details for Running Shift

Performance Analysis	
No. of Machines	8
Act. Eff (%)	65.7%
UEF (%)	91.8%
Prod. Eff (%)	68.7%
Run Time (hrs)	21
Prod. Stop Time (hrs)	1.4
Non-Prod. Stop Time (hrs)	0.8
RPM	569.2
KPS	717.4
Moist	104.8
Wet	135
Vel	161
Out	52
Warp/MPH	18.8
Wet/MPH	22.4
Out/MPH	7.2
Stop	5
Ln	1.4
Min/Stop	01:21
Revol/MPH	55.5

### Hourly Break Analysis



### Manufacturers

#### INTES

105-1, Annapoorna Layout, New Siddhapudur,  
Coimbatore - 641 044. Tamilnadu, India.

Email : intesindia@gmail.com / info@intes.in

Website : www.intes.in

Phone : +91-422-4374499.

### Dealer Address :

[www.intes.in](http://www.intes.in)